



**KAMLA NEHRU COLLEGE, KORBA**  
**KORBA CHHATTISGARH**

ACCREDITED BY NAAC GRADE-"B" (CGPA - 2.55)

☎ 07759-247109 Fax – 247222 website – www.knc-ac.in, e-mail id: info@knc-ac.in

**Student Satisfaction Survey 2020-21 Questionnaire**

- 1. How much of the syllabus was covered in the class?**  
A) 4 – 85 to 100% B) 3 – 70 to 84% C) 2 – 55 to 69% D) 1–30 to 54% E) 0 –Below 30%
- 2. How well did the teachers prepare for the classes?**  
A) 4-Thoroughly B) 3-Satisfactory C) 2 – Poorly D) 1–Indifferently E) 0 –Won't teach at all
- 3. How well were the teachers able to communicate?**  
A) 4 – Always Effective B) 3 – Sometimes Effective C) 2 – Just Satisfactorily D) 1 – Generally Ineffective E) 0 –Very poor Communication.
- 4) The teachers approach to teaching can best be described as –**  
A) 4-Excellent B) 3-Very good C) 2 – Good D) 1–Fair E) 0 –Poor
- 5) Fairness of the internal evaluation process by the teachers.**  
A) 4-Always Fair B) 3-Usually fair C) 2 – Some times unfair D) 1–Usually UnFair E) 0 –Unfair
- 6) Was your performance in assignments discussed with you?**  
A) 4-Everytime B) 3-Usually C) 2 – Occasionally / Sometimes D) 1–Rarely E) 0 –Never
- 7) The institute takes active interest in promoting internship, student exchange, field visit opportunities for students.**  
A) 4-Regularly B) 3-Often C) 2 –Sometimes D) 1–Rarely E) 0 –Never
- 8) The Teaching and mentoring process in your institution facilitates you in Cognitive, Social and Emotional growth.**  
A) 4-Significantly B) 3-Verywell C) 2 – Moderately D) 1–Marginally E) 0 –Not at all
- 9) The institution provides multiple opportunities to learn and grow.**  
A) 4-Strongly agree B) 3-Agree C) 2 – Neutral D) 1–Disagree E) 0 – Strongly Disagree
- 10. Teachers inform you about your expected competencies, course outcomes and programme outcomes.**  
A) 4-Everytime B) 3-Usually C) 2 – Occasionally / Sometimes D) 1–Rarely E) 0 –Never
- 11. Your Mentor does a necessary follow-up with an assigned task to you.**  
A) 4-Everytime B) 3-Usually C) 2 – Occasionally / Sometimes D) 1–Rarely E) 0 –Never

12. The teachers illustrate the concepts through examples and applications.

- A) 4-Everytime B) 3-Usually C) 2 – Occasionally / Sometimes D) 1-Rarely E) 0 –Never

13. The teachers identify your strengths and encourage you with providing right level of challenges.

- A) 4-Fully B) 3-Reasonably C) 2 – Partially D) 1-Slightly E) 0 – Unable to

14. Teachers are able to identify your weaknesses and help you to overcome them.

- A) 4-Everytime B) 3-Usually C) 2 – Occasionally / Sometimes D) 1-Rarely E) 0 –  
Never

15. . The institution makes effort to engage students in the monitoring, review and continuous quality improvement of the teaching learning process.

- A) 4-Strongly agree B) 3-Agree C) 2 – Neutral D) 1-Disagree E) 0 – Strongly Disagree

16. The institute/ teachers use student centric methods, such as experiential learning, participative learning and problem solving methodologies for enhancing learning experiences.

- A) 4-To a great extent B) 3-Moderate C) 2 – Somewhat D) 1-Very little E) 0 –Not at all

17. Teachers encourage you to participate in extracurricular activities.

- A) 4-Strongly agree B) 3-Agree C) 2 – Neutral D) 1-Disagree E) 0 – Strongly Disagree

18). Efforts are made by the institute/ teachers to inculcate soft skills, life skills and employability skills to make you ready for the world of work.

- A) 4-To a great extent B) 3-Moderate C) 2 – Somewhat D) 1-Verylittle E) 0 –Not at all

19. What percentage of teachers use ICT tools such as LCD projector, Multimedia, etc. while teaching.

- A) 4-Above 90% B) 3-70-89 % C) 2 – 50-60 % D) 1-30-49% E) 0 –Below 29%

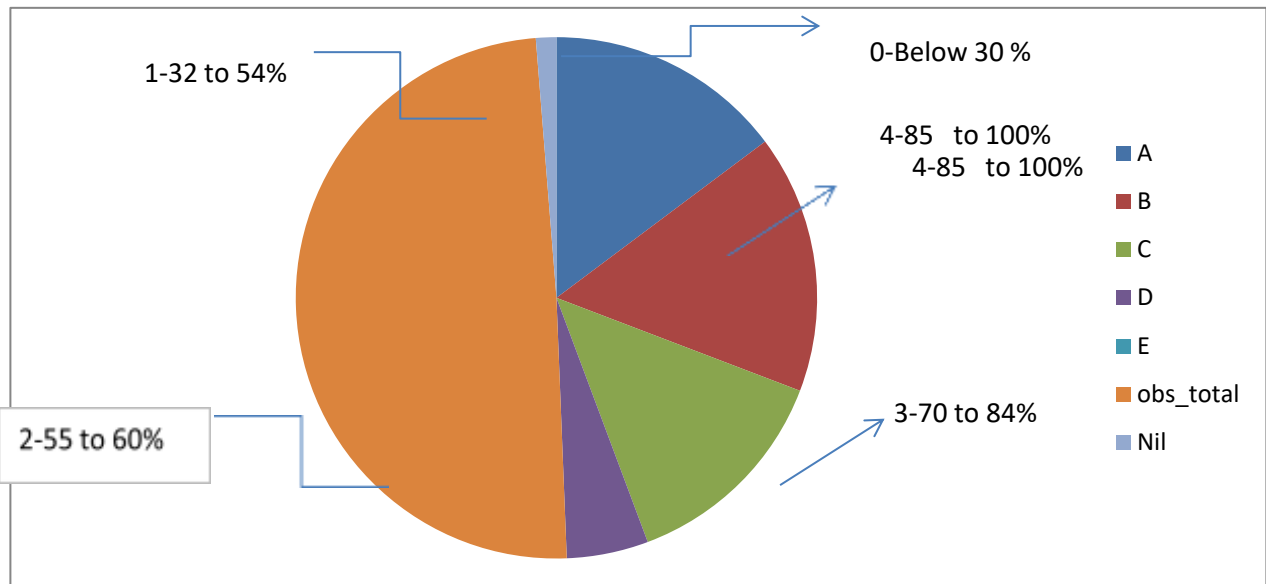
20. The overall quality of teaching-learning process in your institute is very good.

- A) 4-Strongly agree B) 3-Agree C) 2 – Neutral D) 1-Disagree E) 0 – Strongly Disagree

  
I/c PRINCIPAL,  
Kamla Nehru College  
KORBA (C. G.)

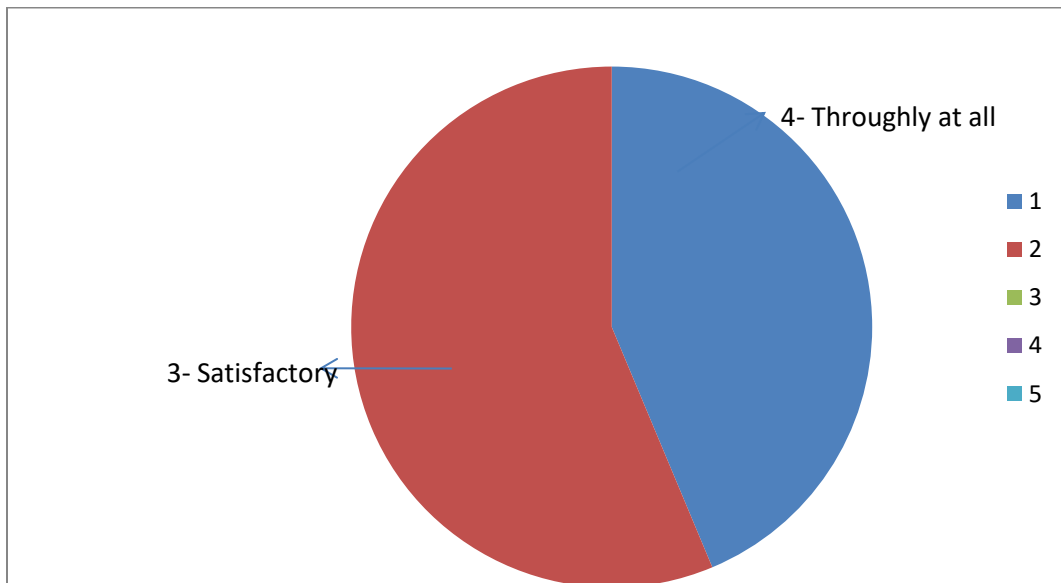
**KAMLA NEHRU COLLEGE KORBA**  
**STUDENT SATISFACTION SURVEY 2020-21**

1. How much of the syllabus was covered in the class?



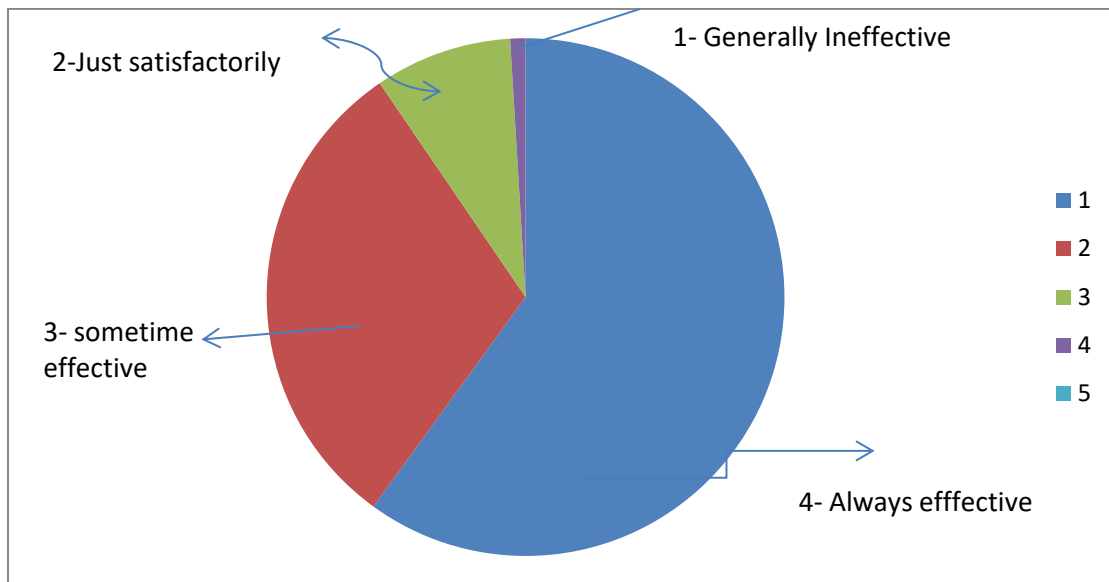
Total Response = 120

2. How well did the teachers prepare for the class ?



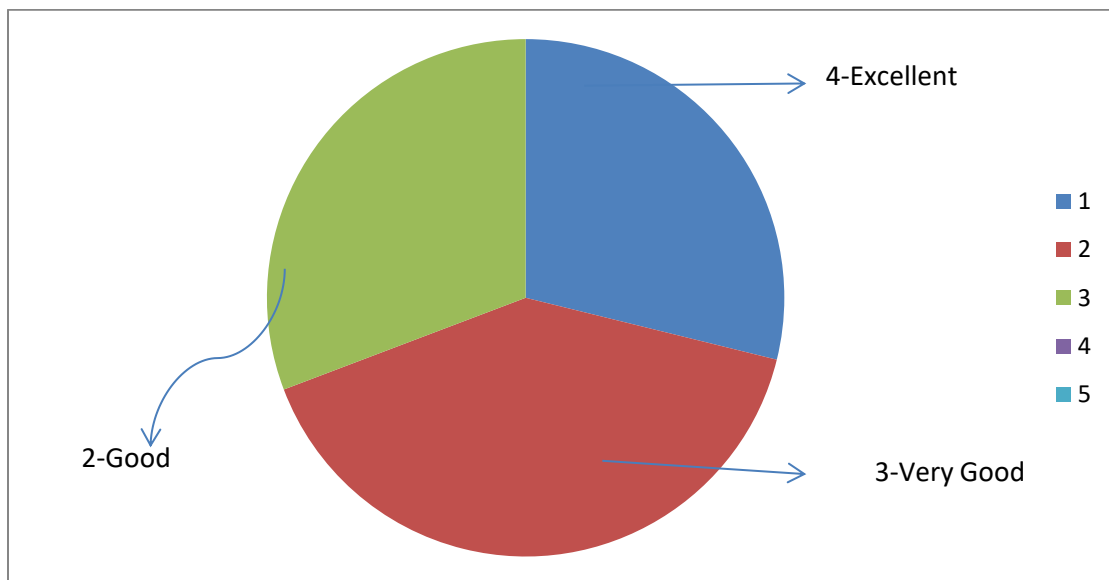
Total Response = 120

## 2. How well where the teachers able to communicate?



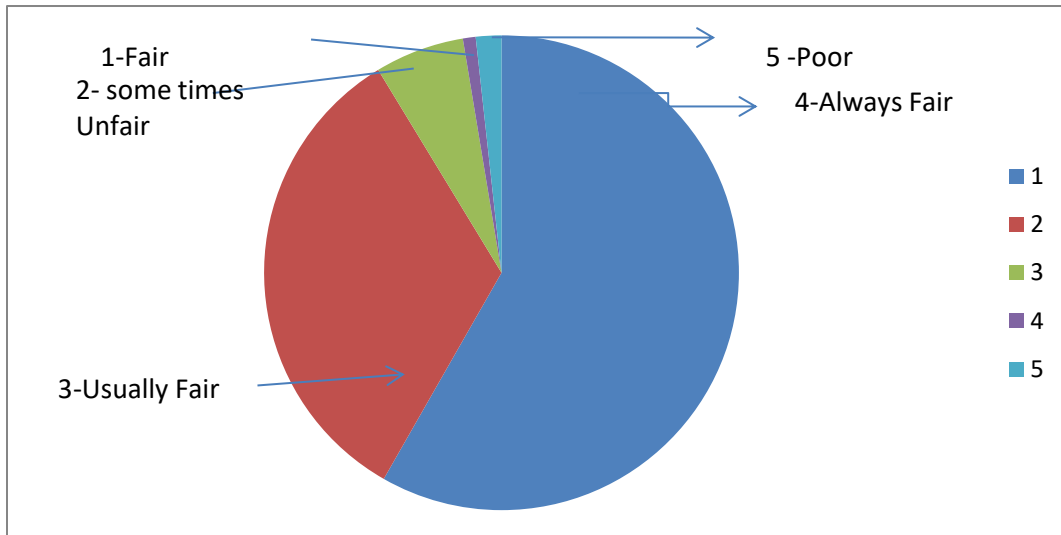
Total Response = 120

## 3. The teachers approach to teaching can be best be describe as –



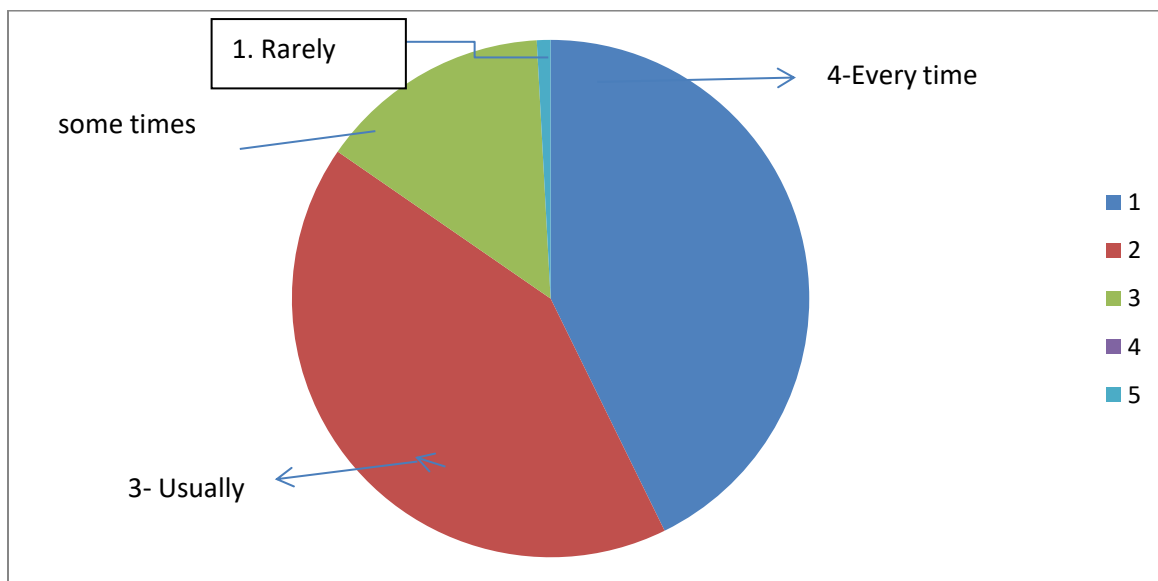
Total Response = 120

4. Fairness of the internal evaluation process by the teachers.



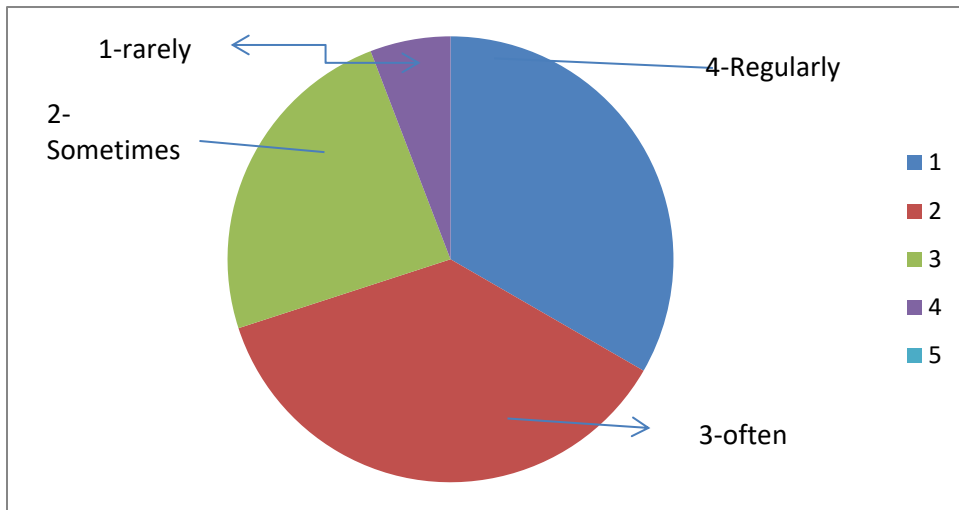
Total Response = 120

5. Was your performance in assignments discussed with you ?



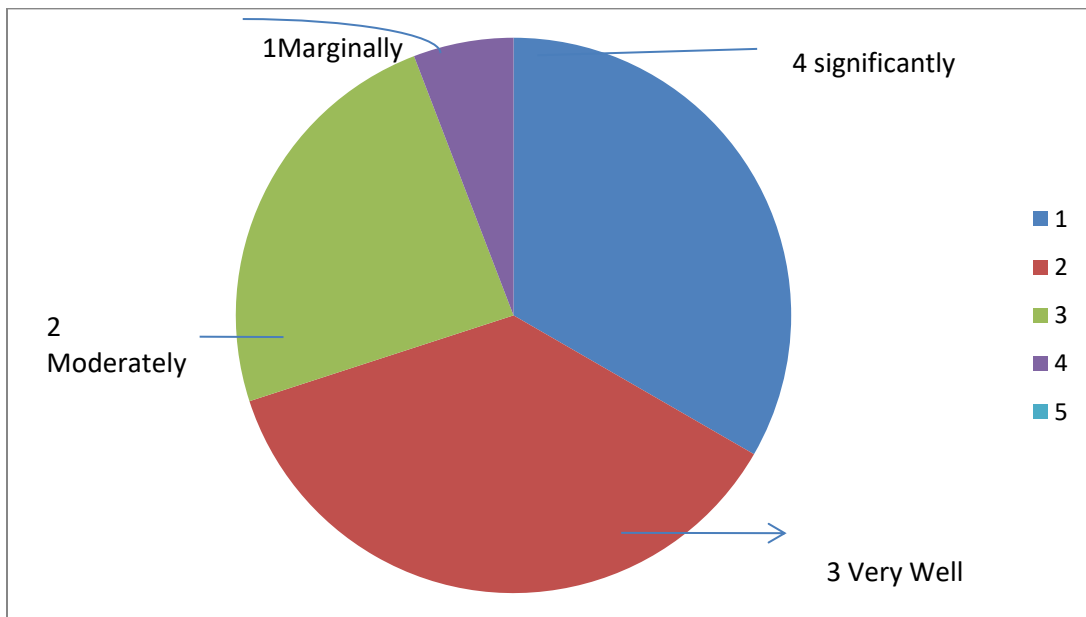
Total Response = 120

6. The Institute takes active interest in promoting internship, student exchange, and field visit opportunities for students.



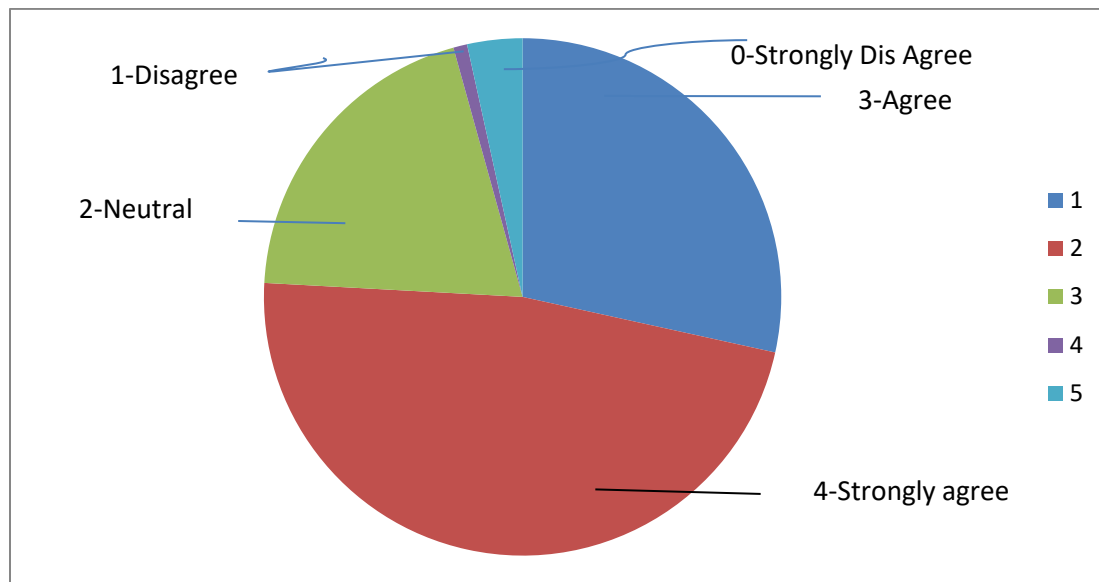
Total Response = 120

7. The teaching and mentoring process in your institution facilitates you in cognitive, social and emotional growth.



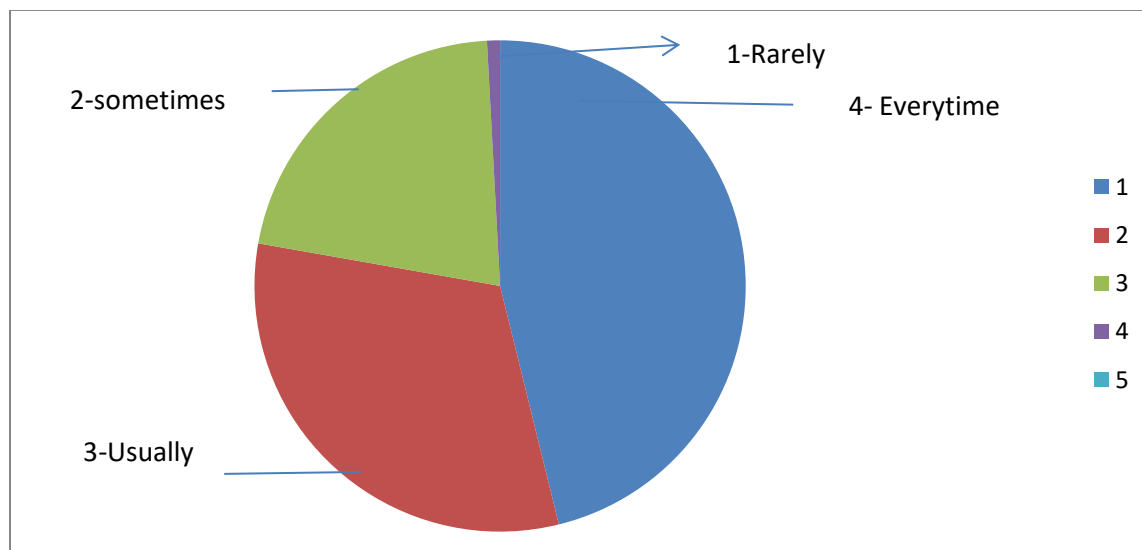
Total Response = 120

9) The Institution provides multiple opportunities to learn and grow-



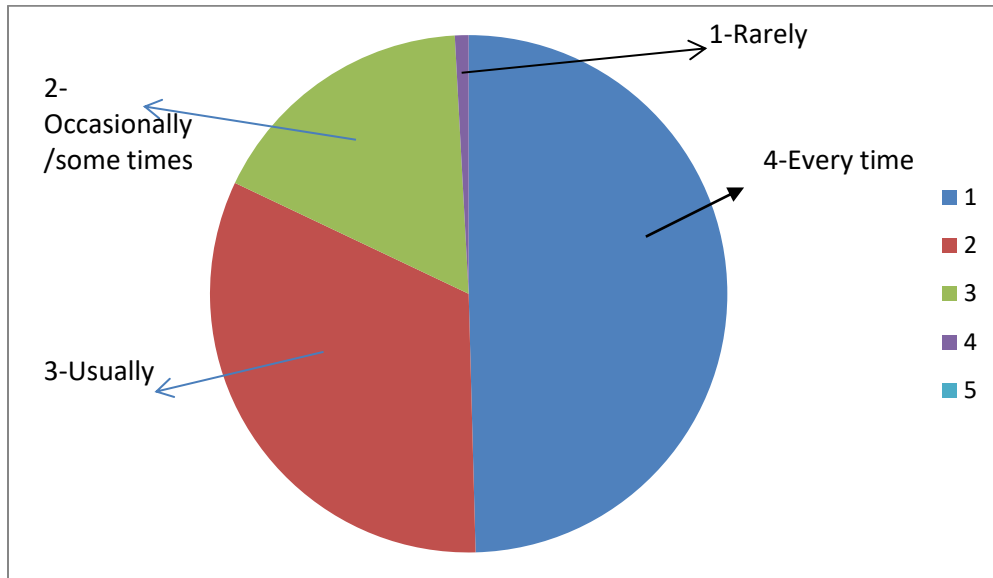
Total Response = 120

10. Teachers inform you about your expected competencies, course outcomes and programme outcomes.



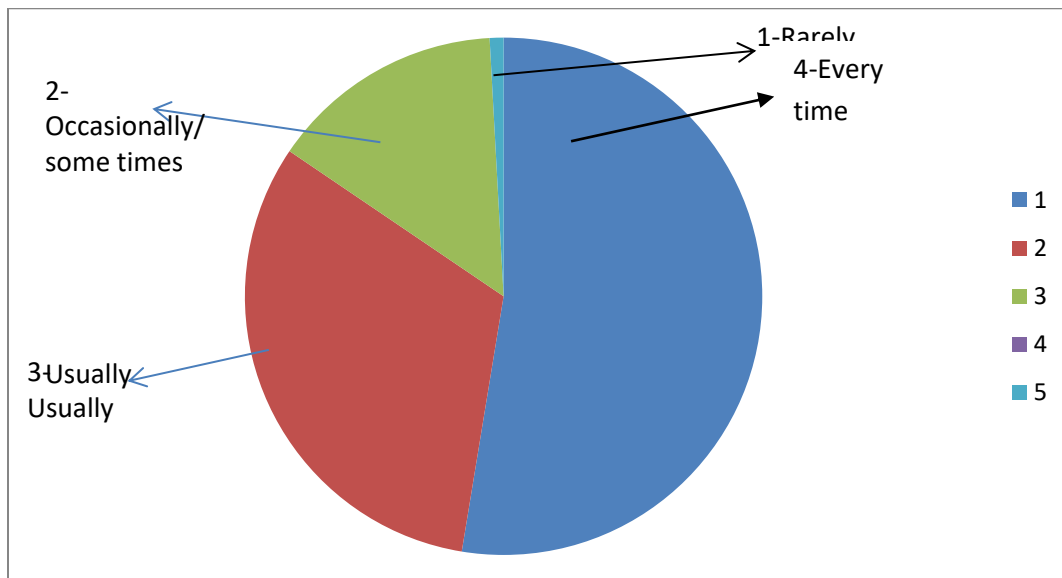
Total Response = 120

11. Your Mentor does a necessary follow-up with an assigned task to you.



Total Response = 120

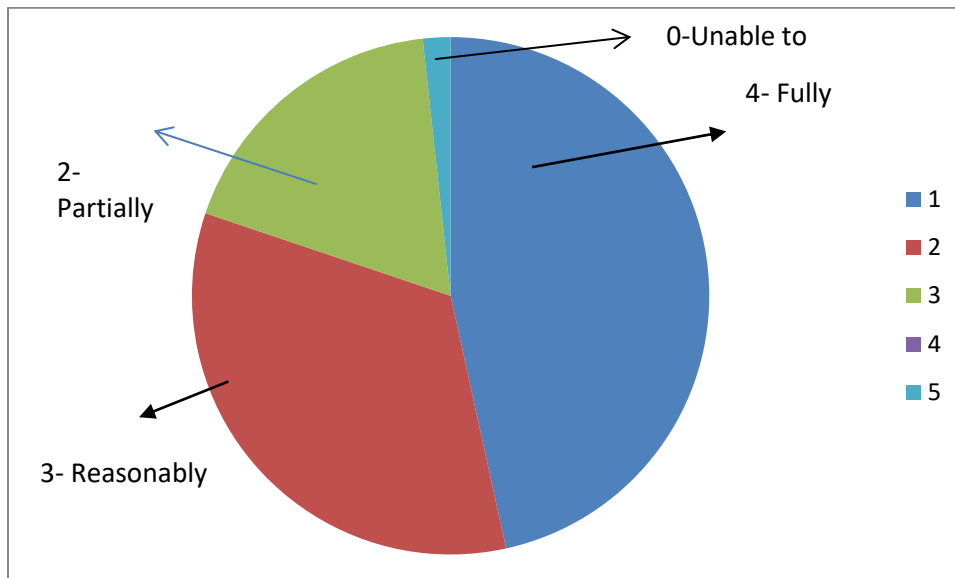
12. The teachers illustrate the concepts through examples and applications.



Total Response = 120

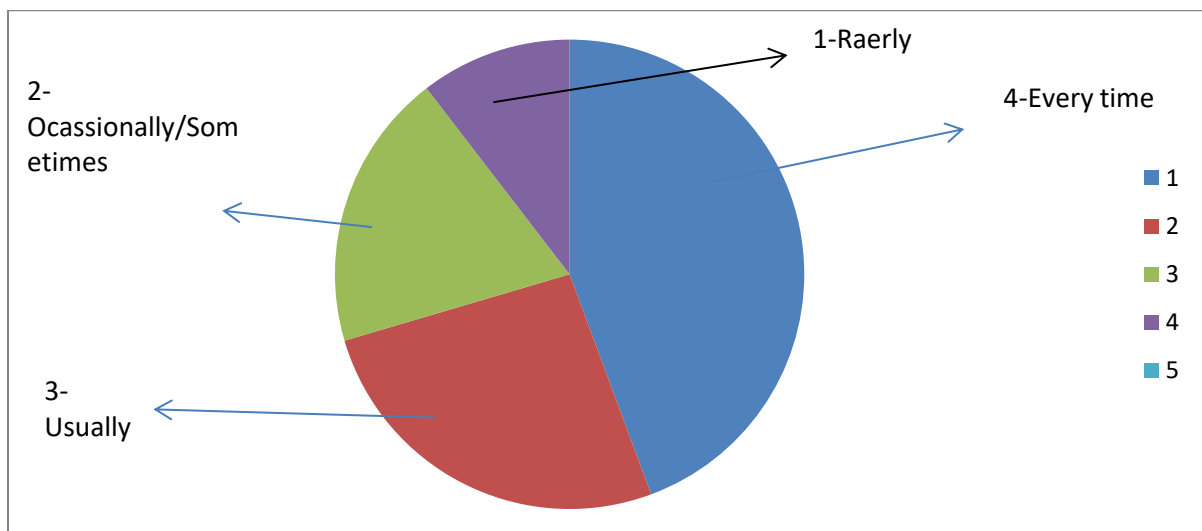


13. The teachers identify your Strengths and encourage you with providing Right level of challenges.



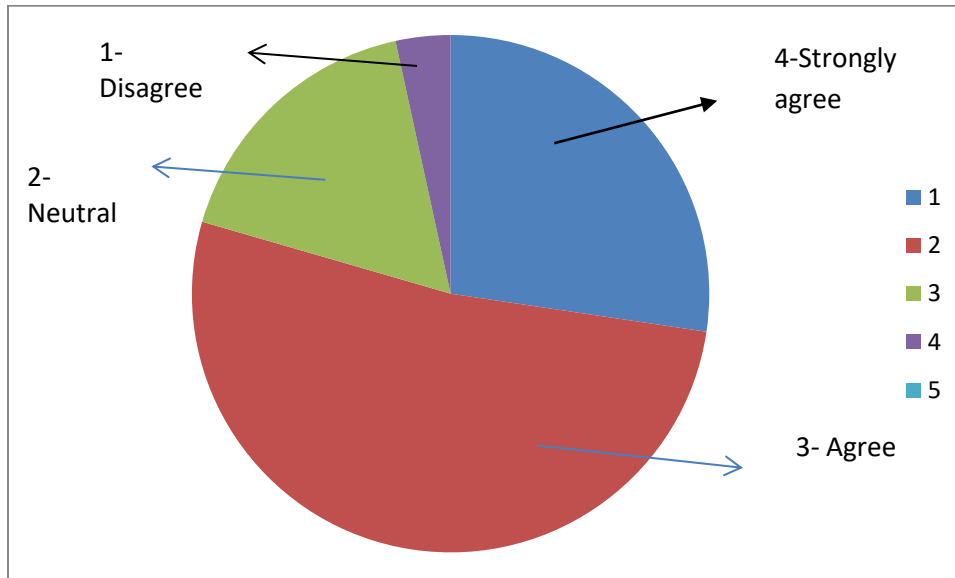
Total Response = 120

14. Teachers are able to identify your weaknesses and help you to overcome them.



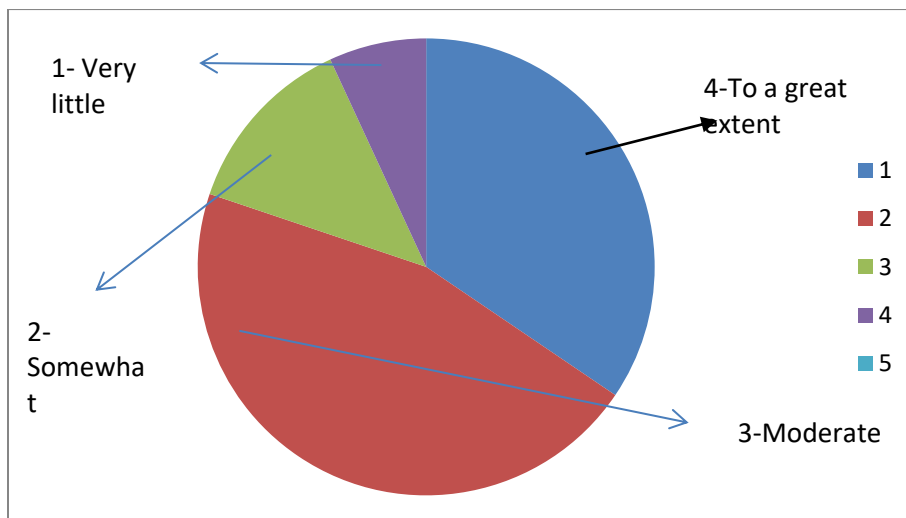
Total Response = 120

15. The institution makes effort to engage students in the monitoring, review and continuous quality improvement of the teaching learning process.



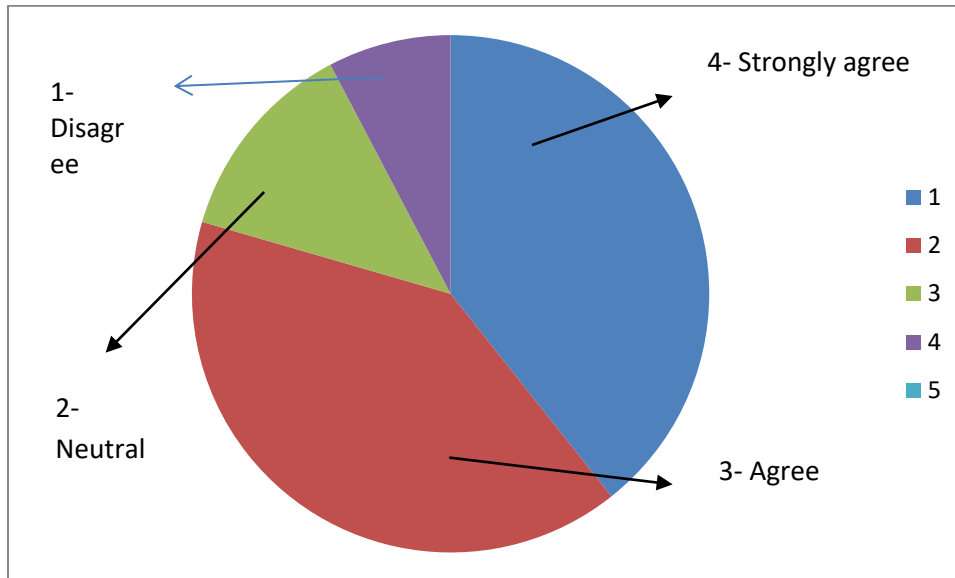
Total Response = 120

16. The institute/Teachers use student centric methods such as experiential learning, participative learning and problem solving methodologies for enhancing learning experiences.



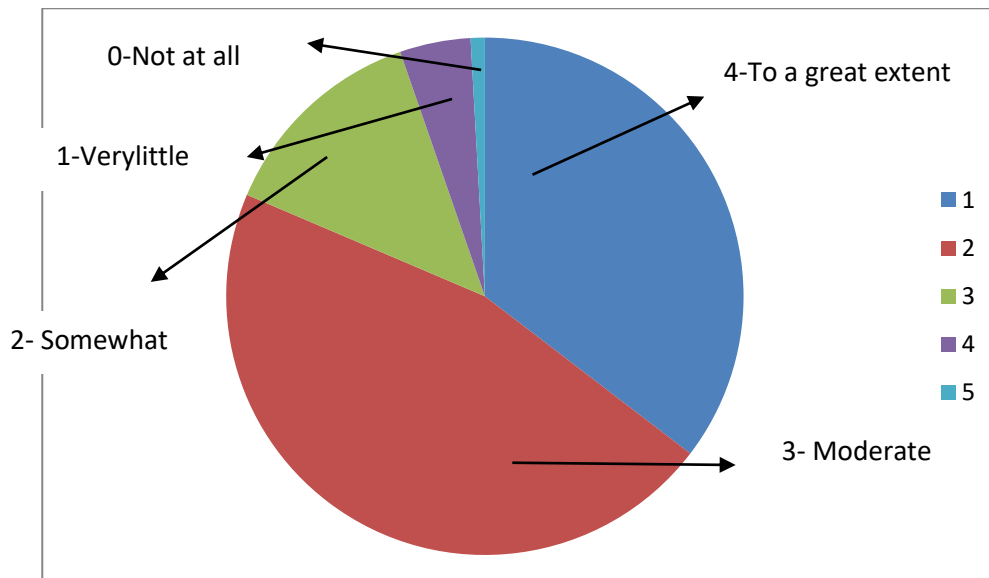
Total Response = 120

17. Teachers encourage you to participate in extracurricular activities.



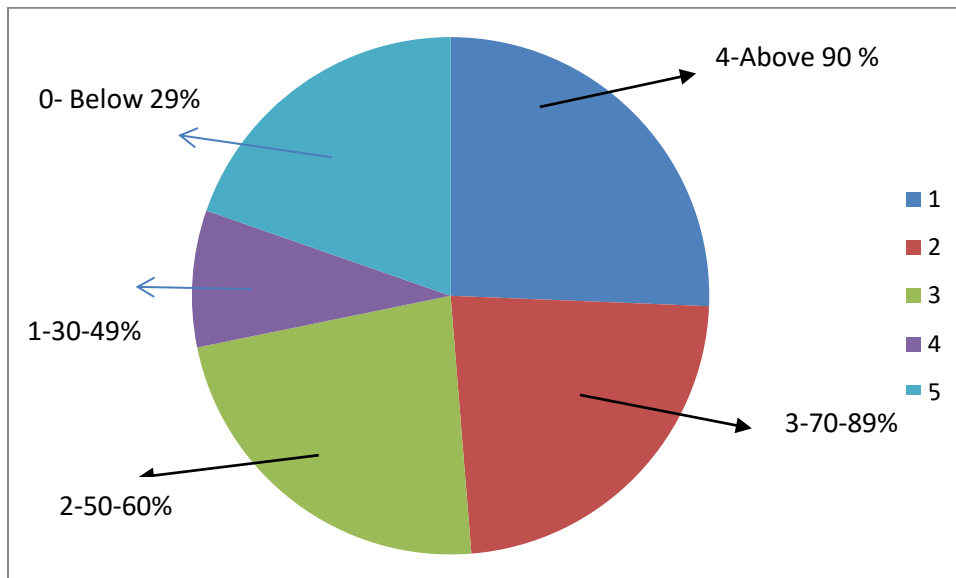
Total Response = 120

18. Efforts are made by the institute/teachers to inculcate soft skills, life skills and employability skills to make you ready for the world of work.



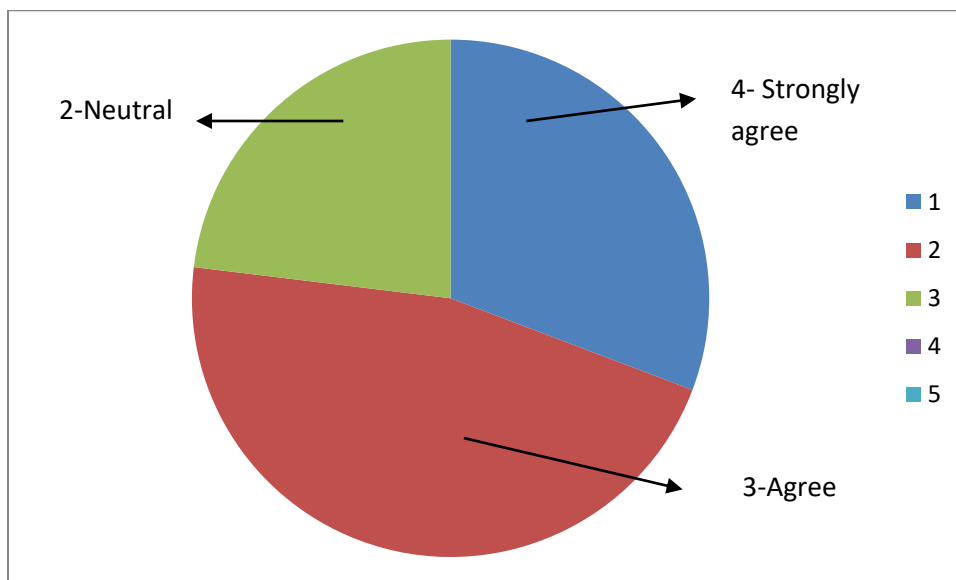
Total Response = 120

19. What percentage of teachers are ICT tools such as LCD projector, multimedia etc while teaching.



Total Response = 120

20. The overall quality of teaching-learning process in your institute is very good.



Total Response = 120

**KAMLA NEHRU COLLEGE KORBA**  
**STUDENT SATISFACTION SURVEY 2020-21**

**Analysis of Student satisfaction survey – Session 2020-21**

The student's satisfaction survey has been carried out for the session 2020-21, it has been observed that students are satisfied with the facilities and functioning of college, According to the prescribed format of NAAC the Student satisfaction Survey has been carried out with Twenty Question which is provided to students for their Feedbacks. The overall feedback was satisfactory and students have raised few issues, Regarding Subjective books (Such as English version of books is less in numbers) and Practical labs Equipments are not Properly Functioning.

To resolve these issues the College Administration Has taken Positive Steps and Discussed that due to covid pandemic Conditions the most of the Classes are online due to that Practical instruments are not Used and Books are not updated , the raised Issues should be resolved in Coming session.

  
I/c PRINCIPAL,  
Kamla Nehru College  
KORBA (C. G.)